



KES 2011

15th International Conference on Knowledge-Based
and Intelligent Information & Engineering Systems
September 12-14, 2011, Kaiserslautern, Germany





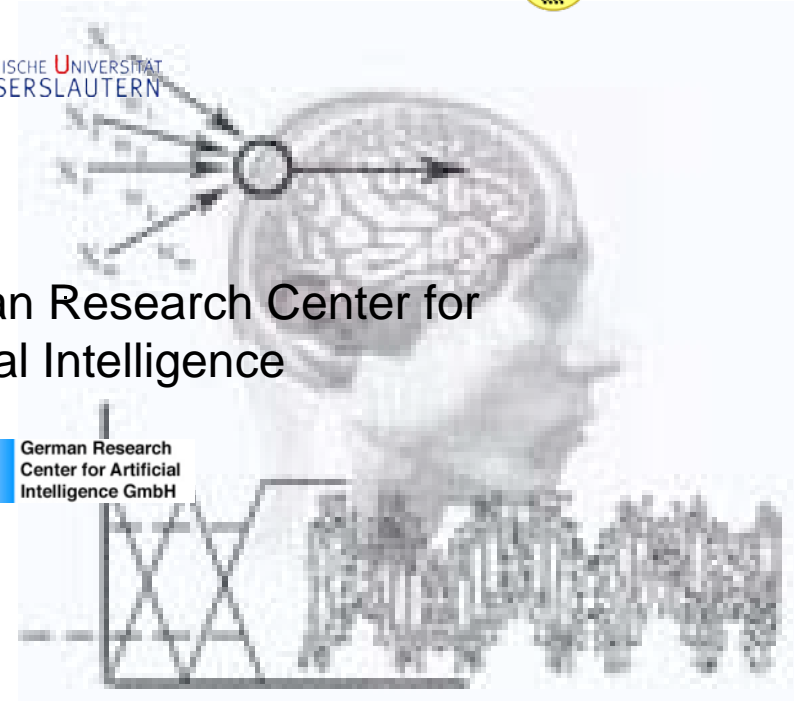
KES 2011 is organised by KES International in conjunction with:



University of Kaiserslautern
Institute of Integrated Sensor Systems



German Research Center for
Artificial Intelligence

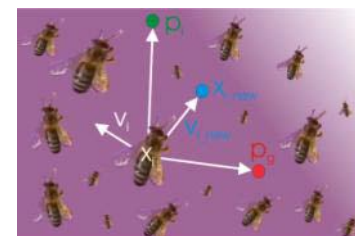
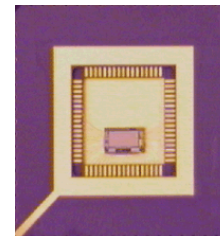




www.uni-kl.de

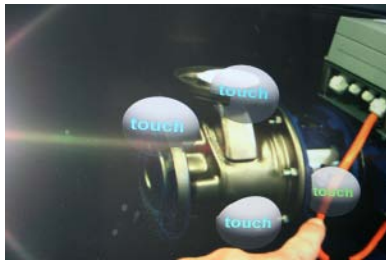


- Founded 1970
- Technology and science oriented
- 10 departments with 95 study programmes
- Various State Research Centres, Units and DFG Research Groups
- 157 Professors
- 811 Scientific staff
- Approximately 12,150 students
- Land area: 36 ha (approx. 94 acres)





- Founded 1988
- Germany's leading research center in the area of innovative software technology for commercial application
- Based in Kaiserslautern, Saarbrücken, Bremen, and Berlin
- Research Areas:
Language Understanding, Augmented Reality, Knowledge Management, Human-Technology Communication, Security/Verification, 3D Graphics & Visualization, Image Understanding, Robotics
- Revenues in 2009: 34.6 Million Euro
- About 790 employees coming from 51 countries
- 109 ongoing Projects



„Get the World through your Office at your Fingertips“

www.dfki.de



German Research Center
for Artificial Intelligence



Institute for Biotechnology
and Drug Research



University of Kaiserslautern



Institute for Composite Materials



Fraunhofer Institute for
Experimental Software
Engineering



Research Institute for Technology
and Work



Fraunhofer Institute for
Industrial Mathematics



University of Applied Sciences
Kaiserslautern



Max Planck Institute for
Software Systems



Institute for Surface
and Thin Film Analysis

The City of Kaiserslautern



Kaiserslautern

located at the edge of the biosphere reserve Palatinate Forest in southwest Germany

Founded 1276

Inhabitants 100,000



Kaiserslautern is located in the Centre of Europe



Airport Distances (hrs):

Frankfurt Int. Airport:	1,5
Frankfurt Hahn:	1,5
Luxembourg:	1,5
Saarbrücken:	1
Zweibrücken:	1

Railway Connection:

Regular stop of the connection
Frankfurt – Paris via
Mannheim and Saarbrücken

Cities (hrs):

Heidelberg:	1
Trier:	1
Strasbourg:	2,5
Paris:	2,5
Munich:	4
Berlin:	6



Environment of Kaiserslautern



Rheinland-Pfalz

Idar-Oberstein

Kaiserslautern

Worms

Grünstadt

Frankenthal

Mannheim

Ludwigshafen

Schifferstadt

Neustadt-an-der-Weinstrasse

Speyer

Saarbrücken

Zweibrücken

Bexbäch

Homburg

Elversberg

Neunkirchen

Tholey

No

S

Ot

arland

Zeiger 49°24'56.78" N 7°41'14.87" O Höhe 351 m Übertragung 100% Sichthöhe 111.77 km

KES 2011 – The Organising Committee



General Chair:

A. Dengel, University of Kaiserslautern
and German Research Center for
Artificial Intelligence, Germany



Programme Co-Chair:

K. Hinkelmann, University of
Applied Sciences Northwestern
Switzerland



General Co-Chair:

A. König, University of Kaiserslautern,
Germany



Programme Co-Chair:

K. Kise, Osaka Prefecture University,
Japan



General Co-Chair:

L.C. Jain, University of South Australia.



Organising Chair:

S. Zinsmeister, German Research
Center for Artificial Intelligence,
Germany



Executive Chair:

R. J. Howlett, University of Brighton,
UK

KES 2011: 12–14 Sept., Kaiserslautern, Germany



**We are looking forward to seeing
you in Kaiserslautern!**

Updates on <http://kes2011.kesinternational.org>